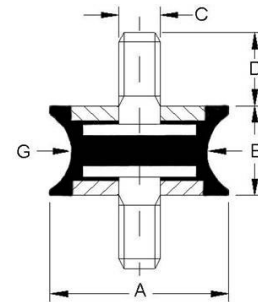


G V V



| | |
|---|--|
| CARATTERISTICHE : | |
| Elemento elastico | : (gomma) |
| Parti metalliche | : acciaio zincato bianco UNI-ISO 2081 |
| Tolleranza | : UNI ISO 3302 |
| Temperatura di esercizio | : da -40°C a +70°C |
| Elevata resistenza all'usura ed al taglio; alta deformabilità | |
| CHARACTERISTICS : | |
| Elastic element | : (rubber) |
| Hardwares | : steel coated with white zinc UNI-ISO 2081 |
| Tolerance | : UNI ISO 3302 |
| Temperature of exercise | : from -40°C to +70°C |
| High resistance to wear and cut; high deformability | |



| CODICE/CODE | CARICO MAX A COMPRESSIONE (daN) MAX COMPRESSION LOAD (daN) | | | Cedimento Deflection (mm) | DIMENSIONI (mm) DIMENSIONS (mm) | | |
|-------------|---|-------|-------|---------------------------------|------------------------------------|------|--------|
| | 45 Sh | 60 Sh | 70 Sh | | AxB | G | CxD |
| 2015GVV1018 | 6,0 | 8,0 | 12,0 | 2,5 | 20x15 | 10,0 | M6x18 |
| 2020GVV1018 | 8,0 | 10,0 | 14,0 | 3,0 | 20x20 | 10,0 | M6x18 |
| 2520GVV1014 | 12,0 | 15,0 | 20,0 | 3,0 | 25x20 | 10,0 | M6x14 |
| 2520GVV1718 | 14,0 | 22,0 | 30,0 | 3,0 | 25x20 | 17,0 | M6x18 |
| 3020GVV2420 | 26,0 | 39,0 | 55,0 | 4,0 | 30x20 | 24,0 | M8x20 |
| 4030GVV1520 | 11,0 | 16,0 | 23,0 | 2,8 | 40x30 | 15,0 | M8x20 |
| 4030GVV2025 | 24,0 | 31,0 | 54,0 | 3,0 | 40x30 | 20,0 | M8x25 |
| 4030GVV2720 | 29,0 | 39,0 | 59,0 | 5,0 | 40x30 | 27,0 | M8x20 |
| 5030GVV3030 | 66,0 | 86,0 | 118,0 | 5,0 | 50x30 | 30,0 | M10x30 |
| 6060GVV5025 | 116,0 | 172,0 | 236,0 | 8,5 | 60x60 | 50,0 | M10x25 |
| 7540GVV5040 | 140,0 | 212,0 | 302,0 | 6,0 | 75x40 | 50,0 | M12x40 |
| 8070GVV7040 | 183,0 | 297,0 | 385,0 | 9,5 | 80x70 | 70,0 | M12x40 |

* Preventivi a richiesta secondo le quantità * Quotations requests depends on quantity