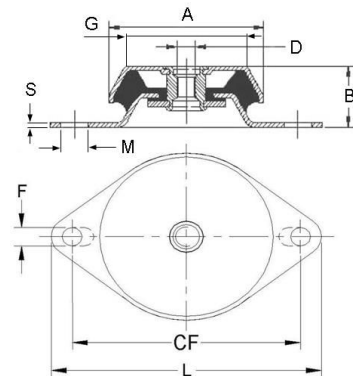


CFAX



CARATTERISTICHE :
 Elemento elastico : (gomma)
 Parti metalliche : acciaio inox AISI 316
 Impieghi: motori a scoppio, motori elettrici , gruppi elettrogeni , gruppi motocompressori e motopompe, gruppi frigoriferi, strutture metalliche.

CHARACTERISTICS :
 Elastic element : (rubber)
 Hardwares : stainless steel AISI 316
 Uses : petrol engines and pistone engine, electric motors, generators, engine compressors, motor-pumps, refrigerators, metal structure.



Con bussola antistrappo
With anti-tear compass

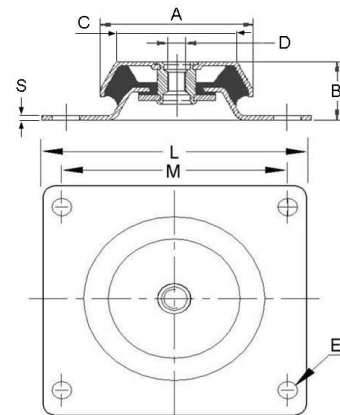
DIMENSIONI / DIMENSIONS (mm)								
CODICE/CODE	A	B	D	F(xM)	CF	G	L	S
CFAX623110	62,0	31,0	M10	9,0(x14,0)	80,0 ÷ 92,0	50,0	110,0	2,5
CFAX623112	62,0	31,0	M12	9,0(x14,0)	80,0 ÷ 92,0	50,0	110,0	2,5
CFAX924512	92,0	43,5	M12	10,4(x14,8)	105,0 ÷ 117,0	73,5	150,0	3,0
CFAX1063812	106,0	38,0	M12	13,0(x19,0)	135,0 ÷ 150,0	75,0	175,0	4,0
CFAX1063816	106,0	38,0	M16	13,0(x19,0)	135,0 ÷ 150,0	75,0	175,0	4,0

CFQAX



CARATTERISTICHE :
 Elemento elastico : (gomma)
 Parti metalliche : acciaio inox AISI 316
 Impieghi: motori a scoppio, motori elettrici , gruppi elettrogeni , gruppi motocompressori e motopompe, gruppi frigoriferi, strutture metalliche.

CHARACTERISTICS :
 Elastic element : (rubber)
 Hardwares : stainless steel AISI 316
 Uses : petrol engines and pistone engine, electric motors, generators, engine compressors, motor-pumps, refrigerators, metal structure.



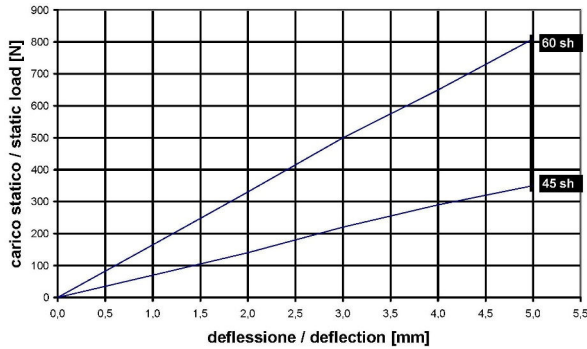
Con bussola antistrappo
With anti-tear compass

* Preventivi a richiesta secondo le quantità
* Quotations requests depends on quantity

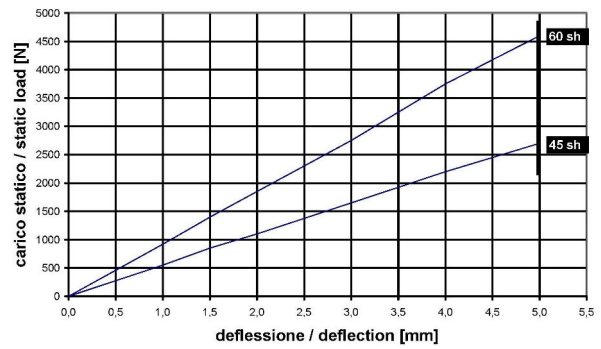
DIMENSIONI / DIMENSIONS (mm)								
CODICE/CODE	A	C	D	E	L	M	B	S
CFQAX1505016	150,0	110,0	M16	14,0	170,0	128,0 ÷ 137,0	52,0	4,0
CFQAX1505020	150,0	110,0	M20	14,0	170,0	128,0 ÷ 137,0	52,0	4,0
CFQAX1776016	180,0	130,0	M16	18,0	190,0	145,0 ÷ 155,0	60,0	5,0
CFQAX1776020	180,0	130,0	M20	18,0	190,0	145,0 ÷ 155,0	60,0	5,0

Le dimensioni e le caratteristiche delle attrezzature riportate nel presente documento, non vincolano la Soleco engineering s.r.l. e possono essere variate senza alcun preavviso.
The dimensions and the features of the equipments mentioned in this price list can be changed by Soleco engineering s.r.l. without notice.

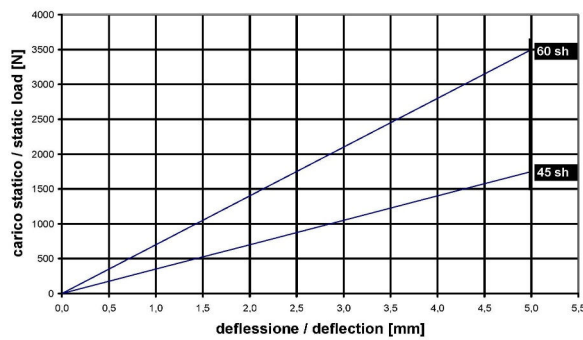
CFAX 623110 - 12



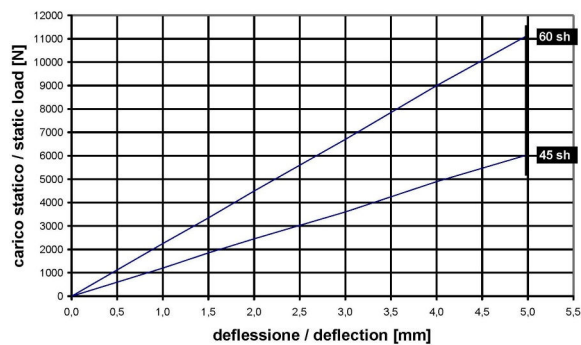
CFAX 924512



CFAX 1063812 - 16



CFQAX 1505016 - 20



CFQAX 1776016 - 20

