

DD

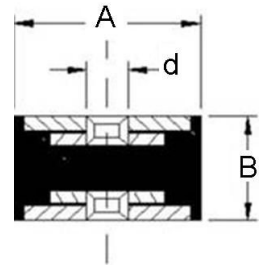


CARATTERISTICHE :

Elemento elastico : (gomma)
Parti metalliche : acciaio zincato bianco
UNI-ISO 2081
Tolleranza : UNI ISO 3302
Temperatura di esercizio : da -40°C a +70°C

CHARACTERISTICS :

Elastic element : (rubber)
Hardwares : steel coated with white zinc
UNI-ISO 2081
Tolerance : UNI ISO 3302
Temperature of exercise : from -40°C to +70°C



CODICE/CODE	CARICO MAX A COMPRESSIONE (daN) MAX COMPRESSION LOAD (daN)			Cedimento Deflection (mm)	DIMENSIONI (mm) DIMENSIONS (mm)	
	45 Sh	60 Sh	70 Sh		AxB	d
2010DD06	10,0	18,0	25,0	1,0	20x10	M6
2015DD06	8,0	15,0	20,0	1,0	20x15	M6
2020DD06	7,0	13,0	19,0	1,5	20x20	M6
2025DD06	7,0	12,0	17,0	2,5	20x25	M6
2030DD06	5,0	10,0	14,0	2,5	20x30	M6
2515DD06	15,0	29,0	41,0	1,0	25x15	M6
2525DD06	13,0	25,0	33,0	2,0	25x25	M6
3020DD08	15,0	29,0	39,0	1,5	30x20	M8
3025DD08	18,0	30,0	41,0	2,0	30x25	M8
3030DD08	15,0	29,0	39,0	2,5	30x30	M8
3040DD08	14,0	28,0	37,0	3,5	30x40	M8
4030DD08	34,0	65,0	89,0	2,5	40x30	M8
4030DD10	34,0	65,0	89,0	2,5	40x30	M10
4035DD08	31,0	57,0	80,0	3,0	40x35	M8
4040DD08	30,0	56,0	76,0	3,5	40x40	M8
4045DD10	29,0	55,0	75,0	4,0	40x45	M10
5025DD10	74,0	137,0	189,0	2,0	50x25	M10
5030DD10	70,0	128,0	176,0	2,5	50x30	M10
5035DD10	61,0	113,0	155,0	3,0	50x35	M10
5040DD10	50,0	93,0	129,0	3,5	50x40	M10
5045DD10	45,0	84,0	118,0	4,0	50x45	M10
5050DD10	41,0	78,0	107,0	4,5	50x50	M10
6035DD12	109,0	202,0	279,0	3,0	60x35	M12
6040DD10	101,0	188,0	256,0	3,5	60x40	M10
6040DD12	101,0	188,0	256,0	3,5	60x40	M12
6045DD12	91,0	171,0	236,0	4,0	60x45	M12
6050DD12	82,0	153,0	211,0	4,5	60x50	M12
6055DD12	74,0	139,0	191,0	5,5	60x55	M12
7550DD12	119,0	234,0	323,0	4,5	75x50	M12

* Preventivi a richiesta secondo le quantità

* Quotations requests depends on quantity

Le dimensioni e le caratteristiche delle attrezzature riportate nel presente documento, non vincolano la Soleco engineering s.r.l. e possono essere variate senza alcun preavviso.
The dimensions and the features of the equipments mentioned in this price list can be changed by Soleco engineering s.r.l. without notice.