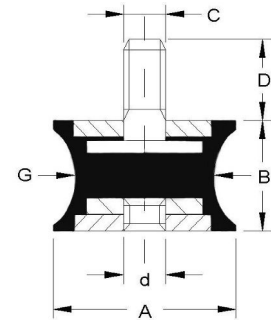


GVD



CARATTERISTICHE :	
Elemento elastico	: (gomma)
Parti metalliche	: acciaio zincato bianco UNI-ISO 2081
Tolleranza	: UNI ISO 3302
Temperatura di esercizio	: da -40°C a +70°C
Elevata resistenza all'usura ed al taglio; alta deformabilità	
CHARACTERISTICS :	
Elastic element	: (rubber)
Hardwares	: steel coated with white zinc UNI-ISO 2081
Tolerance	: UNI ISO 3302
Temperature of exercise	: from -40°C to +70°C
High resistance to wear and cut; high deformability	



CODICE/CODE	CARICO MAX A COMPRESSIONE (daN) MAX COMPRESSION LOAD (daN)			Cedimento Deflection (mm)	DIMENSIONI (mm) DIMENSIONS (mm)			
	45 Sh	60 Sh	70 Sh		AxB	G	d	CxD
2520GVD1014	9,0	13,0	17,0	3,0	25x20	10,0	M6	M6x14
2520GVD1718	15,0	22,0	31,0	3,0	25x20	17,0	M6	M6x18
3020GVD2420	27,0	41,0	56,0	4,0	30x20	24,0	M8	M8x20
4030GVD1516	12,0	17,0	23,0	2,8	40x30	15,0	M8	M8x16
4030GVD2016	24,0	31,0	55,0	2,8	40x30	20,0	M8	M8x16
4030GVD2720	35,0	53,0	73,0	5,0	40x30	27,0	M8	M8x20
6060GVD5025	119,0	176,0	242,0	8,5	60x60	50,0	M10	M10x25

* Preventivi a richiesta secondo le quantità * Quotations requests depends on quantity