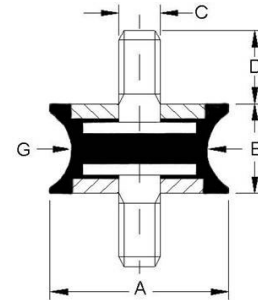


G V V



CARATTERISTICHE :	
Elemento elastico	: (gomma)
Parti metalliche	: acciaio zincato bianco UNI-ISO 2081
Tolleranza	: UNI ISO 3302
Temperatura di esercizio	: da -40°C a +70°C
Elevata resistenza all'usura ed al taglio; alta deformabilità	
CHARACTERISTICS :	
Elastic element	: (rubber)
Hardwares	: steel coated with white zinc UNI-ISO 2081
Tolerance	: UNI ISO 3302
Temperature of exercise	: from -40°C to +70°C
High resistance to wear and cut; high deformability	



CODICE/CODE	CARICO MAX A COMPRESIONE (daN) MAX COMPRESSION LOAD (daN)			Cedimento Deflection (mm)	DIMENSIONI (mm) DIMENSIONS (mm)		
	45 Sh	60 Sh	70 Sh		AxB	G	CxD
2015GVV1018	6,0	8,0	12,0	2,5	20x15	10,0	M6x18
2020GVV1018	8,0	10,0	14,0	3,0	20x20	10,0	M6x18
2520GVV1014	12,0	15,0	20,0	3,0	25x20	10,0	M6x14
2520GVV1718	14,0	22,0	30,0	3,0	25x20	17,0	M6x18
3020GVV2420	26,0	39,0	55,0	4,0	30x20	24,0	M8x20
4030GVV1520	11,0	16,0	23,0	2,8	40x30	15,0	M8x20
4030GVV2025	24,0	31,0	54,0	3,0	40x30	20,0	M8x25
4030GVV2720	29,0	39,0	59,0	5,0	40x30	27,0	M8x20
5030GVV3030	66,0	86,0	118,0	5,0	50x30	30,0	M10x30
6060GVV5025	116,0	172,0	236,0	8,5	60x60	50,0	M10x25
7540GVV5040	140,0	212,0	302,0	6,0	75x40	50,0	M12x40
8070GVV7040	183,0	297,0	385,0	9,5	80x70	70,0	M12x40

* Preventivi a richiesta secondo le quantità * Quotations requests depends on quantity