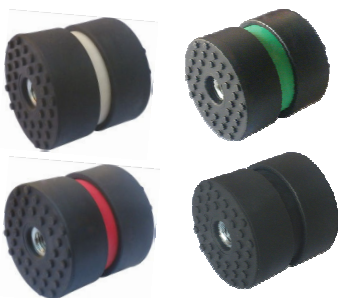


NOCE4040



CARATTERISTICHE :

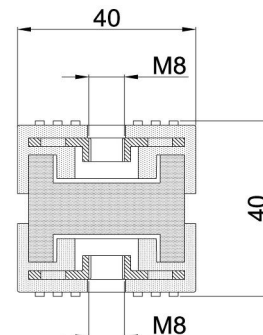
Elemento elastico : Elastomero
Parti metalliche : inserti in acciaio zincato bianco UNI-ISO 2081
Impieghi: motori a scoppio, motori elettrici, gruppi elettrogeni, gruppi motocompressori e motopompe, gruppi frigoriferi, strutture metalliche.

CHARACTERISTICS :

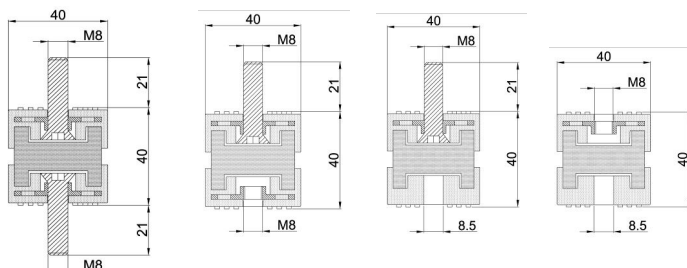
Elastic element : Elastomer
Hardwares : steel coated with white zinc UNI-ISO 2081
Uses : petrol engines and piston engine, electric motors, generators, engine compressors, motor-pumps, refrigerators, metal structure.

A richiesta: realizzazione degli antivibranti in materiale autoestinguente UL94-V0.

On request: antivibratings realization with retardant-flame material UL94-V0.

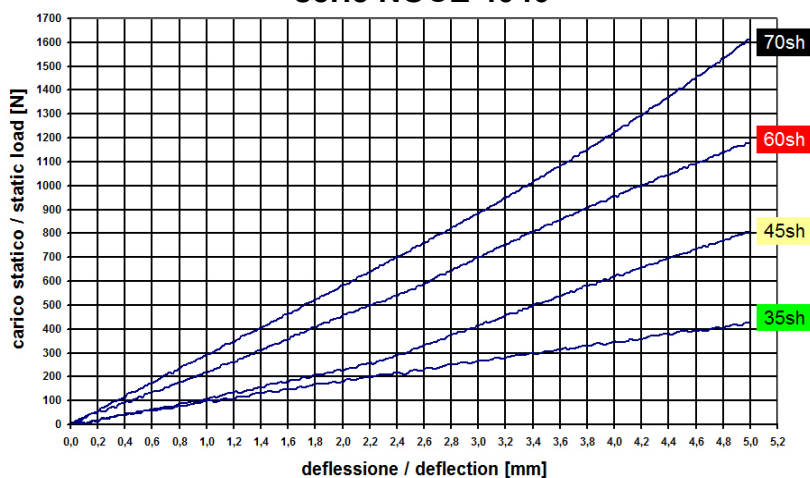


CODICE / CODE	DIMENSIONI / DIMENSIONS (mm)			CARICO MAX (daN) MAX LOAD (daN)			
	Ø 1	Ø 2	h	35 Sh	45 Sh	60 Sh	70 Sh
NOCEDD4040M8	40	40	40	42	80	118	160
NOCEVD4040M8x20	40	40	40	42	80	118	160
NOCEVV4040M8x20	40	40	40	42	80	118	160
NOCEVE4040M8	40	40	40	42	80	118	160
NOCEDE4040M8	40	40	40	42	80	118	160



Versioni disponibili con lunghezza delle viti a richiesta
 Available options with screws high on request

serie NOCE 4040



Le dimensioni e le caratteristiche delle attrezzature riportate nel presente documento, non vincolano la Soleco engineering s.r.l. e possono essere variate senza alcun preavviso.
 The dimensions and the features of the equipments mentioned in this price list can be changed by Soleco engineering s.r.l. without notice.