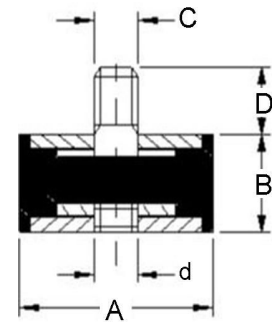


VD



CARATTERISTICHE :	
Elemento elastico	: (gomma)
Parti metalliche	: acciaio zincato bianco UNI-ISO 2081
Tolleranza	: UNI ISO 3302
Temperatura di esercizio	: da -40°C a +70°C
CHARACTERISTICS :	
Elastic element	: (rubber)
Hardwares	: steel coated with white zinc UNI-ISO 2081
Tolerance	: UNI ISO 3302
Temperature of exercise	: from -40°C to +70°C



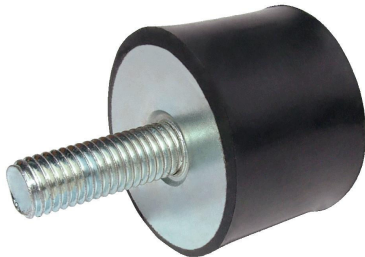
CODICE/CODE	CARICO MAX A COMPRESSIONE (daN) MAX COMPRESSION LOAD (daN)			Cedimento Deflection (mm)	DIMENSIONI (mm) DIMENSIONS (mm)		
	45 Sh	60 Sh	70 Sh		AxB	d	CxD
1515VD14	5,0	9,0	12,0	1,5	15x15	M4	M4x14
2010VD16	12,0	20,0	29,0	1,0	20x10	M6	M6x16
2015VD16	9,0	17,0	24,0	1,5	20x15	M6	M6x16
2020VD16	7,0	13,0	18,0	1,5	20x20	M6	M6x16
2025VD16	7,0	12,0	17,0	2,5	20x25	M6	M6x16
2030VD16	5,0	10,0	14,0	2,5	20x30	M6	M6x16
2515VD18	18,0	34,0	48,0	1,5	25x15	M6	M6x18
2520VD18	16,0	29,0	39,0	1,5	25x20	M6	M6x18
2525VD18	13,0	24,0	32,0	2,0	25x25	M6	M6x18
3015VD23	23,0	41,0	58,0	1,0	30x15	M8	M8x23
3020VD23	21,0	38,0	52,0	1,5	30x20	M8	M8x23
3025VD23	17,0	29,0	40,0	2,0	30x25	M8	M8x23
3030VD23	15,0	28,0	38,0	2,5	30x30	M8	M8x23
3040VD23	14,0	27,0	36,0	3,5	30x40	M8	M8x23
4020VD23	41,0	77,0	107,0	1,5	40x20	M8	M8x23
4025VD25	38,0	72,0	98,0	2,0	40x25	M10	M10x25
4028VD25	35,0	66,0	90,0	2,5	40x28	M10	M10x25
4030VD23	33,0	63,0	87,0	2,5	40x30	M8	M8x23
4030VD28	33,0	63,0	87,0	2,5	40x30	M10	M10x28
4035VD23	30,0	56,0	78,0	3,0	40x35	M8	M8x23
4040VD23	29,0	54,0	74,0	3,5	40x40	M8	M8x23
4040VD25	29,0	54,0	74,0	3,5	40x40	M10	M10x25
4045VD25	28,0	52,0	74,0	4,0	40x45	M10	M10x25
5020VD28	85,0	161,0	221,0	1,5	50x20	M10	M10x28
5025VD28	79,0	148,0	205,0	2,0	50x25	M10	M10x28
5030VD28	69,0	126,0	174,0	2,5	50x30	M10	M10x28
5035VD28	60,0	111,0	153,0	3,0	50x35	M10	M10x28
5040VD28	49,0	92,0	127,0	3,5	50x40	M10	M10x28

* Preventivi a richiesta secondo le quantità

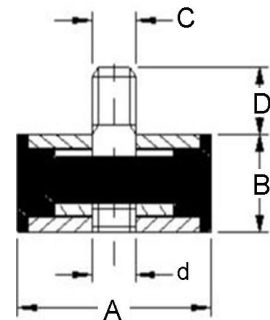
* Quotations requests depends on quantity

Le dimensioni e le caratteristiche delle attrezzature riportate nel presente documento, non vincolano la Soleco engineering s.r.l. e possono essere variate senza alcun preavviso.
The dimensions and the features of the equipments mentioned in this price list can be changed by Soleco engineering s.r.l. without notice.

VD



CARATTERISTICHE :	
Elemento elastico	: (gomma)
Parti metalliche	: acciaio zincato bianco UNI-ISO 2081
Tolleranza	: UNI ISO 3302
Temperatura di esercizio	: da -40°C a +70°C
CHARACTERISTICS :	
Elastic element	: (rubber)
Hardwares	: steel coated with white zinc UNI-ISO 2081
Tolerance	: UNI ISO 3302
Temperature of exercise	: from -40°C to +70°C



CODICE/CODE	CARICO MAX A COMPRESSIONE (daN) MAX COMPRESSION LOAD (daN)			Cedimento Deflection (mm)	DIMENSIONI (mm) DIMENSIONS (mm)		
	45 Sh	60 Sh	70 Sh		AxB	d	CxD
5045VD28	44,0	82,0	115,0	4,0	50x45	M10	M10x28
5050VD28	40,0	76,0	105,0	4,5	50x50	M10	M10x28
6035VD32	107,0	223,0	274,0	3,0	60x35	M12	M12x32
6040VD25	99,0	184,0	251,0	3,5	60x40	M10	M10x25
6045VD32	90,0	168,0	232,0	4,0	60x45	M12	M12x32
6055VD32	74,0	137,0	187,0	5,0	60x55	M12	M12x32
7030VD25	126,0	249,0	312,0	3,0	60x55	M12	M12x32
10040VD44	214,0	321,0	403,0	3,5	100x40	M16	M16x44

* Preventivi a richiesta secondo le quantità

* Quotations requests depends on quantity