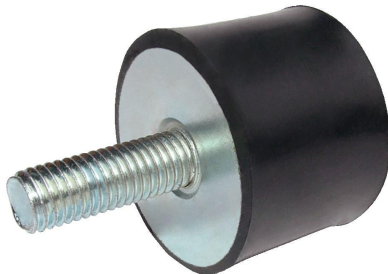
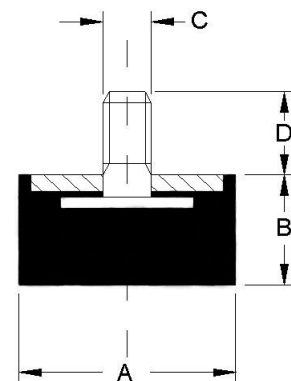


VE



CARATTERISTICHE :	
Elemento elastico	: (gomma)
Parti metalliche	: acciaio zincato bianco UNI-ISO 2081
Tolleranza	: UNI ISO 3302
Temperatura di esercizio	: da -40°C a +70°C
CHARACTERISTICS :	
Elastic element	: (rubber)
Hardware	: steel coated with white zinc UNI-ISO 2081
Tolerance	: UNI ISO 3302
Temperature of exercise	: from -40°C to +70°C



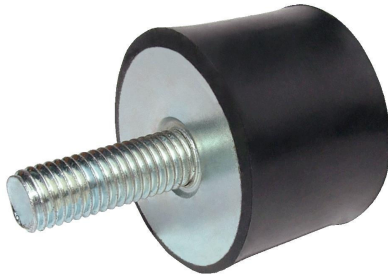
CODICE/CODE	CARICO MAX A COMPRESSIONE (daN) MAX COMPRESSION LOAD (daN)			Cedimento Deflection (mm)	DIMENSIONI (mm) DIMENSIONS (mm)	
	45 Sh	60 Sh	70 Sh		AxB	CxD
2015VE16	33,0	50,0	70,0	4,0	20x15	M6x16
2020VE16	25,0	38,0	53,0	5,0	20x20	M6x16
2025VE16	26,0	40,0	56,0	6,0	20x25	M6x16
2030VE16	21,0	30,0	43,0	7,5	20x30	M6x16
2520VE20	18,0	28,0	44,0	3,0	25x20	M8x20
2525VE18	44,0	65,0	90,0	6,0	25x25	M6x18
2530VE20	38,0	57,0	75,0	7,5	25x30	M8x20
3015VE23	86,0	129,0	180,0	4,0	30x15	M8x23
3020VE23	74,0	111,0	152,0	5,0	30x20	M8x23
3025VE23	62,0	97,0	128,0	6,0	30x25	M8x23
3030VE23	51,0	75,0	104,0	7,5	30x30	M8x23
3040VE23	52,0	76,0	106,0	10,0	30x40	M8x23
4020VE23	152,0	228,0	326,0	5,0	40x20	M8x23
4025VE25	133,0	200,0	275,0	6,0	40x25	M10x25
4030VE23	114,0	171,0	237,0	7,5	40x30	M8x23
4035VE23	101,0	150,0	209,0	8,5	40x35	M8x23
4040VE25	95,0	74,0	186,0	9,0	40x40	M10x25
4045VE25	91,0	137,0	190,0	11,0	40x45	M10x25
5015VE25	277,0	414,0	569,0	4,0	50x15	M10x25
5020VE28	336,0	501,0	691,0	5,0	50x20	M10x28
5025VE28	294,0	437,0	604,0	6,0	50x25	M10x28
5030VE28	242,0	357,0	494,0	7,5	50x30	M10x28
5035VE28	213,0	304,0	418,0	9,0	50x35	M10x28
5040VE28	167,0	247,0	342,0	10,0	50x40	M10x28
5045VE28	147,0	219,0	304,0	11,0	50x45	M10x28
5050VE28	133,0	199,0	275,0	12,5	50x50	M10x28
6030VE37	427,0	627,0	865,0	7,5	60x30	M12x37

* Preventivi a richiesta secondo le quantità

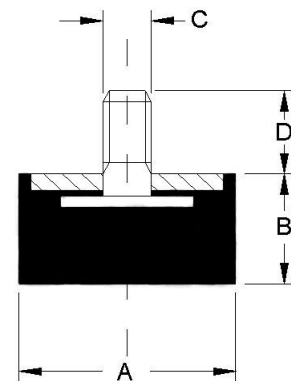
* Quotations requests depends on quantity

Le dimensioni e le caratteristiche delle attrezzature riportate nel presente documento, non vincolano la Soleco engineering s.r.l. e possono essere variate senza alcun preavviso.
The dimensions and the features of the equipments mentioned in this price list can be changed by Soleco engineering s.r.l. without notice.

VE



CARATTERISTICHE :	
Elemento elastico	: (gomma)
Parti metalliche	: acciaio zincato bianco UNI-ISO 2081
Tolleranza	: UNI ISO 3302
Temperatura di esercizio	: da -40°C a +70°C
CHARACTERISTICS :	
Elastic element	: (rubber)
Hardwares	: steel coated with white zinc UNI-ISO 2081
Tolerance	: UNI ISO 3302
Temperature of exercise	: from -40°C to +70°C



CODICE/CODE	CARICO MAX A COMPRESSIONE (daN) MAX COMPRESSION LOAD (daN)			Cedimento Deflection (mm)	DIMENSIONI (mm) DIMENSIONS (mm)	
	45 Sh	60 Sh	70 Sh		AxB	CxD
6040VE25	370,0	551,0	751,0	10,0	60x40	M10x25
6045VE32	333,0	494,0	684,0	11,0	60x45	M12x32
6050VE37	294,0	437,0	604,0	12,5	60x50	M12x37
6055VE32	266,0	395,0	542,0	14,0	60x55	M12x32
7040VE40	484,0	722,0	999,0	10,0	70x40	M12x40
7540VE35	506,0	739,0	1031,0	10,0	75x40	M12x35
8060VE35	490,0	729,0	1019,0	14,5	80x60	M14x35

- * Preventivi a richiesta secondo le quantità
- * Quotations requests depends on quantity