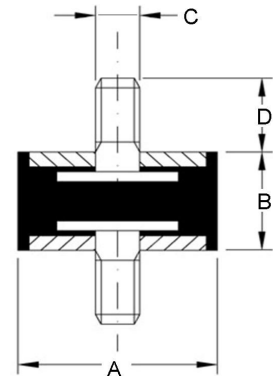


VV



CARATTERISTICHE :	
Elemento elastico	: (gomma)
Parti metalliche	: acciaio zincato bianco UNI-ISO 2081
Tolleranza	: UNI ISO 3302
Temperatura di esercizio	: da -40°C a +70°C
CHARACTERISTICS :	
Elastic element	: (rubber)
Hardware	: steel coated with white zinc UNI-ISO 2081
Tolerance	: UNI ISO 3302
Temperature of exercise	: from -40°C to +70°C



CODICE/CODE	CARICO MAX A COMPRESSIONE (daN) MAX COMPRESSION LOAD (daN)			Cedimento Deflection	DIMENSIONI (mm) DIMENSIONS (mm)	
	45 Sh	60 Sh	70 Sh	(mm)	AxB	CxD
1008VV10	6,0	15,0	20,0	1,0	10x08	M4x10
1510VV10	10,0	21,0	26,0	1,0	15x10	M4x10
2010VV16	15,0	31,0	39,0	1,0	20x10	M6x16
2015VV16	9,0	25,0	34,0	1,2	20x15	M6x16
2020VV16	7,0	13,0	20,0	1,5	20x20	M6x16
2025VV20	7,0	12,0	17,0	2,0	20x25	M6x20
2030VV16	5,0	9,0	13,0	2,5	20x30	M6x16
2510VV20	25,0	34,0	49,0	1,0	25x10	M6x20
2515VV18	18,0	33,0	47,0	1,5	25x15	M6x18
2520VV20	15,0	28,0	39,0	2,0	25x20	M6x20
2525VV18	12,0	23,0	31,0	2,0	25x25	M6x18
2530VV18	11,0	22,0	28,0	2,5	25x30	M6x18
3015VV23	22,0	41,0	56,0	1,0	30x15	M8x23
3020VV23	20,0	37,0	50,0	1,5	30x20	M8x23
3025VV23	17,0	28,0	39,0	2,0	30x25	M8x23
3030VV23	15,0	27,0	37,0	2,5	30x30	M8x23
3040VV23	14,0	26,0	35,0	3,0	30x40	M8x23
4015VV23	39,0	78,0	108,0	1,5	40x15	M8x23
4020VV23	41,0	75,0	104,0	1,5	40x20	M8x23
4025VV25	37,0	70,0	95,0	2,0	40x25	M10x25
4030VV23	32,0	61,0	85,0	2,5	40x30	M8x23
4030VV28	32,0	61,0	85,0	2,5	40x30	M10x28
4035VV23	29,0	55,0	76,0	3,0	40x35	M8x23
4035VV25	29,0	55,0	76,0	3,0	40x35	M10x25
4040VV23	28,0	53,0	73,0	3,5	40x40	M8x23
4045VV25	27,0	51,0	72,0	4,0	40x45	M10x25
5020VV28	83,0	165,0	215,0	1,5	50x20	M10x28

* Preventivi a richiesta secondo le quantità

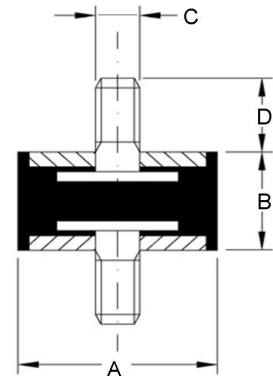
* Quotations requests depends on quantity

Le dimensioni e le caratteristiche delle attrezzature riportate nel presente documento, non vincolano la Soleco engineering s.r.l. e possono essere variate senza alcun preavviso.
The dimensions and the features of the equipments mentioned in this price list can be changed by Soleco engineering s.r.l. without notice.

VV



CARATTERISTICHE :	
Elemento elastico	: (gomma)
Parti metalliche	: acciaio zincato bianco UNI-ISO 2081
Tolleranza	: UNI ISO 3302
Temperatura di esercizio	: da -40°C a +70°C
CHARACTERISTICS :	
Elastic element	: (rubber)
Hardwares	: steel coated with white zinc UNI-ISO 2081
Tolerance	: UNI ISO 3302
Temperature of exercise	: from -40°C to +70°C



CODICE/CODE	CARICO MAX A COMPRESSIONE (daN) MAX COMPRESSION LOAD (daN)			Cedimento Deflection (mm)	DIMENSIONI (mm) DIMENSIONS (mm)	
	45 Sh	60 Sh	70 Sh		AxB	CxD
5025VV28	77,0	144,0	199,0	2,0	50x25	M10x28
5030VV28	67,0	155,0	170,0	2,5	50x30	M10x28
5035VV28	58,0	108,0	148,0	3,0	50x35	M10x28
5040VV28	48,0	89,0	123,0	3,5	50x40	M10x28
5045VV28	43,0	80,0	112,0	4,0	50x45	M10x28
5050VV28	39,0	74,0	102,0	4,5	50x50	M10x28
6030VV37	106,0	169,0	270,0	2,5	60x30	M12x37
6035VV32	104,0	193,0	267,0	3,0	60x35	M12x32
6040VV37	96,0	179,0	244,0	3,5	60x40	M12x37
6045VV32	87,0	163,0	225,0	4,0	60x45	M12x32
6050VV37	78,0	146,0	201,0	4,5	60x50	M12x37
6055VV32	72,0	133,0	182,0	5,0	60x55	M12x32
6535VV25	126,0	235,0	325,0	3,0	65x35	M10x25
6545VV37	98,0	181,0	251,0	4,0	65x45	M12x37
6550VV37	84,0	155,0	216,0	4,5	65x50	M12x37
7040VV37	136,0	206,0	343,0	3,5	70x40	M12x37
7050VV28	112,0	207,0	286,0	4,5	70x50	M10x28
7525VV40	152,0	268,0	365,0	2,5	75x25	M12x40
7530VV40	146,0	237,0	354,0	3,0	75x30	M12x40
7555VV40	130,0	202,0	320,0	5,0	75x55	M12x40
10040VV45	211,0	312,0	502,0	3,5	100x40	M16x40
10060VV45	186,0	279,0	471,0	5,5	100x60	M16x40

* Preventivi a richiesta secondo le quantità

* Quotations requests depends on quantity

Le dimensioni e le caratteristiche delle attrezzature riportate nel presente documento, non vincolano la Soleco engineering s.r.l. e possono essere variate senza alcun preavviso.
The dimensions and the features of the equipments mentioned in this price list can be changed by Soleco engineering s.r.l. without notice.